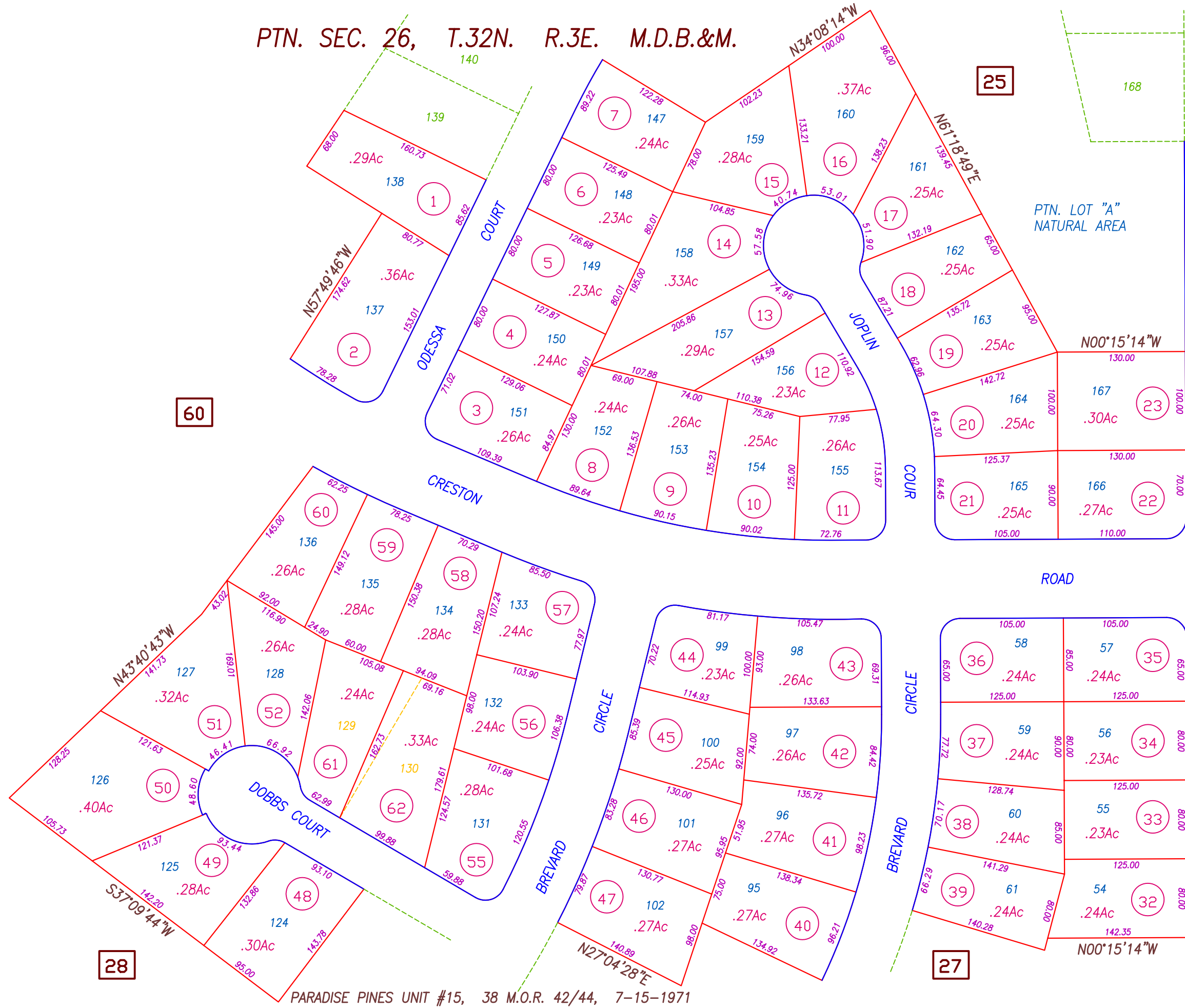


PTN. SEC. 26, T.32N. R.3E. M.D.B.&M.



PONDEROSA WAY

Butte County Assessor's Map Book 64, Page 26

NOTE: These parcels are for assessment purposes only and may not constitute legal parcels.

| | | | |
|------------|----|------------|--------------|
| CREATED BY | DB | CREATED ON | 2-27-2001 |
| REVISED BY | DB | REVISED ON | 2-27-2001 |
| | | EFFECTIVE | 2001-02 ROLL |

Compiled By The Butte County Assessor's Office

PARADISE PINES UNIT #15, 38 M.O.R. 42/44, 7-15-1971